

Construction staff and operatives must ensure the principle contractor has provided thorough and accurate information on all health and safety aspects relating to the designs identified on this drawing include the review of:

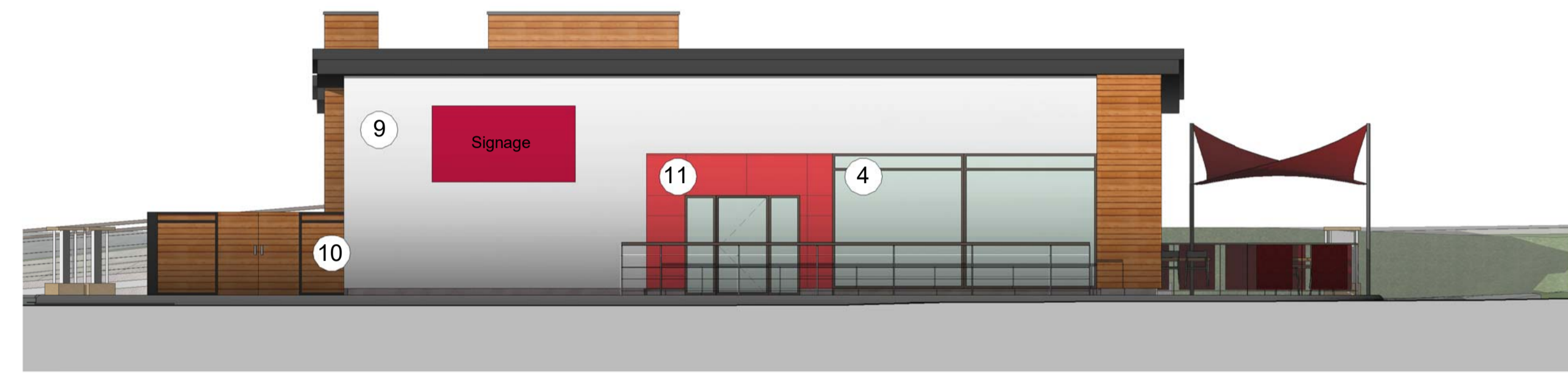
- Designers/contractors risk assessments
- Method statement
- Permit to work
- Pre construction information

The designers note that the following health and safety risk relating to this drawing have not been eliminated during the design process:

ref	residual risk

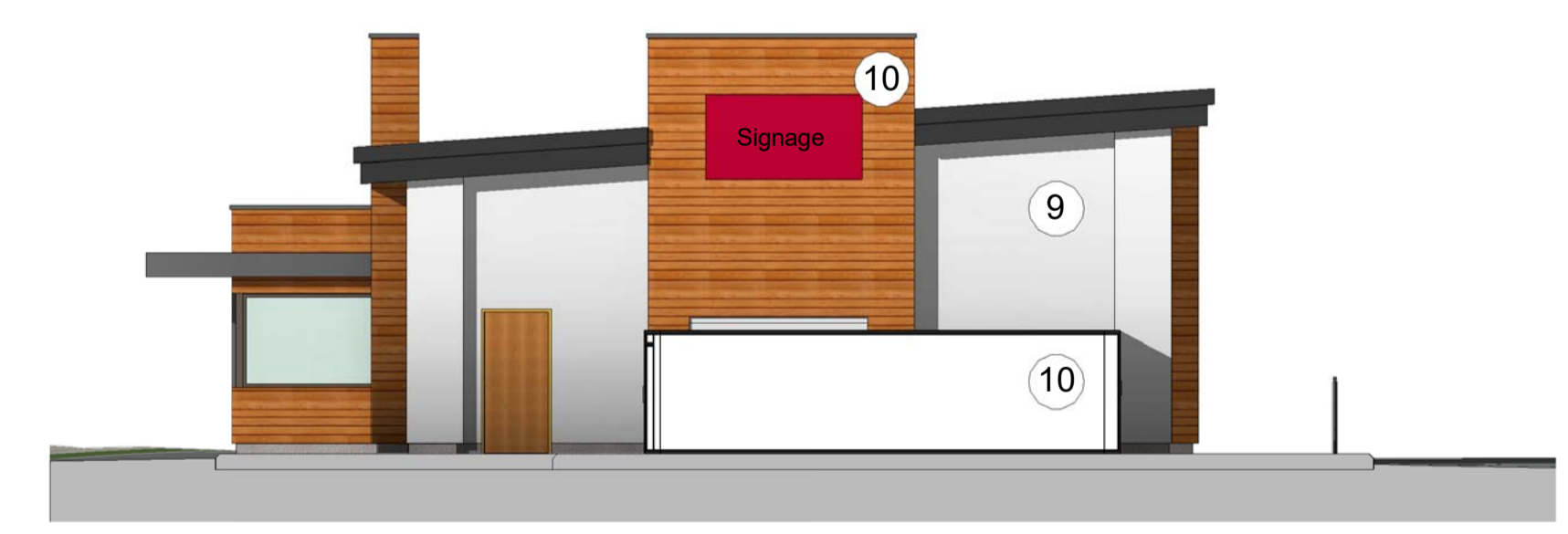
- Material Key**
1. Kingspan Composite Panel - Gull Grey
  2. Kingspan Composite Panel - Metallic Copper
  3. Blue/Grey Brick
  4. Curtain Walling
  5. Aluminium trim - Merlin Grey

- Standard Details:**
- Unit 1
6. Wall through colour render White RAL 9100
  7. Plinth through colour render Grey RAL 7038
  7. Insulated metal panel RAL 9006
- Unit 11
9. Through colour render White RAL 9010
  10. British Western Red Cedar laid horizontally
  11. 2mm thick aluminium backed panels, powder coated to Pantone 202C



**Unit 11 - North Elevation**  
1 : 100

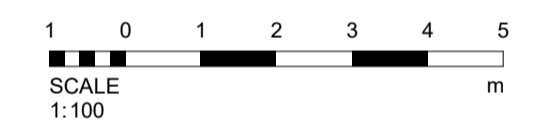
**Unit 11 - East Elevation**  
1 : 100



**Unit 11 - South Elevation**  
1 : 100



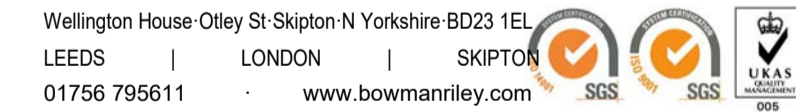
**Unit 11 - West Elevation**  
1 : 100



revision	date	by	chk
A	21/12/17	WG	AW
Unit 11 Bin Store Widened by 300mm			

All dimensions to be verified on site, and the Architect informed of any discrepancy. All drawings and specifications should be read in conjunction with the Health and Safety Plan; all conflicts should be reported to the CDM Co-ordinator. This drawing is the copyright of Bowman Riley Architects Limited. © DO NOT SCALE THIS DRAWING

- preliminary
- planning
- comment
- tender
- construction
- record



drawn by	checked by	date	scale @ A1
BS	AW	11/23/17	1 : 100

Hattersley, District Centre  
Hattersley

Proposed Elevations - Unit 11

project number	drawing number	revision
7735	013	A

file reference: \\br-dc01.bowmanriley.com\caddat68\_L\_P17735 - Hattersley\7735 - 07 Revit\WG Revit Local\7735-BRA-Hattersley-M03-A-Site Model.rvt